



UNIFIX-PU60

SINGLE COMPONENT WATER-ACTIVATED
HYDROPHILIC PU GROUT

UNIFIX – PU60

SINGLE COMPONENT WATER-ACTIVATED HYDROPHILIC PU GROUT

PRODUCT FEATURE

UNIFIX-PU60 is a hydrophilic hydro-active injection grout based on an MDI (methylenediphenylisocyanate) polyurethane. **UNIFIX-PU60** has very fast reaction time and strong tensile strength. When **UNIFIX-PU60** reacts with water, it starts to foam and expand very quickly. As the grout reacts, it expands and stops the water leak within a very short period of time. **UNIFIX-PU60** is one of most popular choice amount all the waterproofing grout.

Another major advantages in our newest **UNIFIX-PU60** is the ease of application. Unlike other leading two-component grout in the market, **UNIFIX-PU60** polyurethane grout is a one-component resin. No catalyst or 2nd component needed during the injection mixing.

Expansion ratio is depended on the amount of water added to the resin mixture and the moisture level in its environment. It reacts to a very dense and highly flexible material foam.

FIELD OF APPLICATION

- Stop leak and filling of large cavernous spaces and cracks in concrete structure
- Small construction place which requires fast result in stopping gushing water
- Use as for first injection to stop leak and filling large crack hole with massive water flow
- Concrete construction joints

TECHNICAL PROPERTIES

APPEARANCE	Yellow
SOLID	95%
DENSITY , g/ml	18 Lb/ft
MIXING RATIO	0
VISCOSITY , CPS	250 - 450 cps
EXPANSION RATE	600%
TOXICITY	See handling Instruction (flammable liquid)
FOAMING TIME	180 sec @ 25°C
SHELF LIFE (UNOPENED)	6 months

PHYSICAL PROPERTIES

ELONGATION	250%
TENSILE STRENGTH	5 kg/cm ²
ADHESIVE STRENGTH	30 psi
CORROSIVENESS	Non-corrosive
STORAGE T.P. 20°C	12 months
APPEARANCE	Yellow Foam
TOXICITY	Cured material is essentially non-toxic
SHRINKAGE	20% linear shrinkage
GEL TIME	30 sec (25°C)
SETTING TIME	300 sec (25°C)
PACKING	10 kg / pail

STORAGE

MATERIAL SHOULD BE STORED IN A DRY AND COOL PLACE BETWEEN +50°C TO +30°C. Temperature above 50°C may cause premature formation of insoluble solids. (above small letter)

METHOD STATEMENT

▶ PREPARATION

Basic cleaning and preparation on concrete surface, measure the width and thickness of the crack. Inspect the leakage condition of the affected structure.

▶ DRILLING

Drill 10mm / 13mm / 16mm diameter holes at about 40-50mm away from the leaking spot at about 45° angle to the depth until hole intercept with the crack line or leaking point. Make sure the drill bit size is the same diameter as the injection packer.

▶ PACKER INSTALLATION

Clean the drilled hole using air blower or pipe water. Insert the packer into drilled hole, ensure rubber sleeve of packer are tighten securely. **(DO NOT OVER TIGHTENED, PACKER MIGHT DAMAGE)**

▶ INJECTION

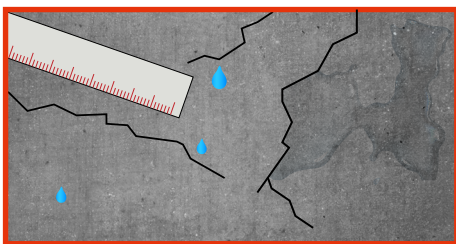
Injection by using **M-1500** high pressure injection machine. Start Inject the **UNIFIX-PU60** and maintain the pressure at 5000 PSI for a few minutes before proceed to next injection point. Recommended to re-inject the point for multiple times by removing the used packer and reinstall a new one to ensure the crack is completely compacted and no water leakage.

▶ REMOVING OF PACKER

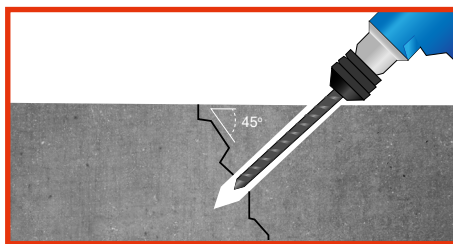
Remove the packer after material set. Allow the **UNIFIX-PU60** to cure for 24 hours. Break the packer by using plier or hammer.

▶ FINISHING

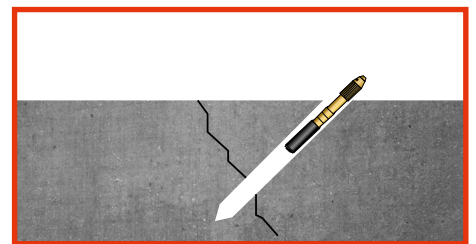
Remove the expose cured **UNIFIX-PU60** Grout on the structure surface. Plug all hole with suitable mortar. Tools and equipment just can be clean with thinner immediately after use to prevent blockage. **(DO NOT USE WATER)**



PREPARATION



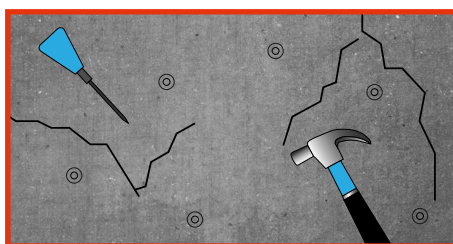
DRILLING



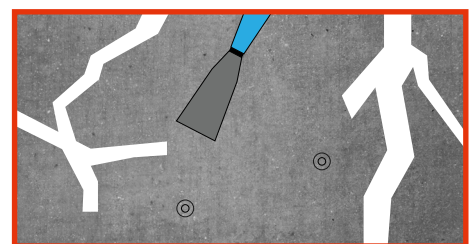
PACKER INSTALLATION



INJECTION



REMOVING OF PACKER



FINISHING

ACCESSORIES



**HIGH PRESSURE INJECTION MACHINE
M1500**



PU MACHINE INJECTION HOSE



PACKERS & CONNECTORS

SAFETY CAUTION

Keep out of the reach of children. Keep in a cool dry place, tightly closed. Avoid contact with water before use. Safety goggles, gloves and safety clothing must be worn at all times. While injection, a full face shield is strongly recommended. In case of material comes in contact with the skin, rinse thoroughly with soap and water. If the spill get into the eyes, rinse eyes with water for few minutes. If irritation occur continuously, consult with your physician immediately.

This technical data sheet is given in good faith and does not guarantee the application work. All Unity Reliance technical data sheets & method statements are updated on a regular basis and can be subject to change without notice. It is the users responsibility to obtain the latest version of the information required.



UNITY RELIANCE (M) SDN BHD

6-2, Jalan Meranti SD13/5, Bandar Sri Damansara
52200 Petaling Jaya Selangor.

Website : <https://www.unityreliance.com>

Email : unityreliance88@gmail.com

Tel : 03 - 6263 0139 / 010 - 785 1159